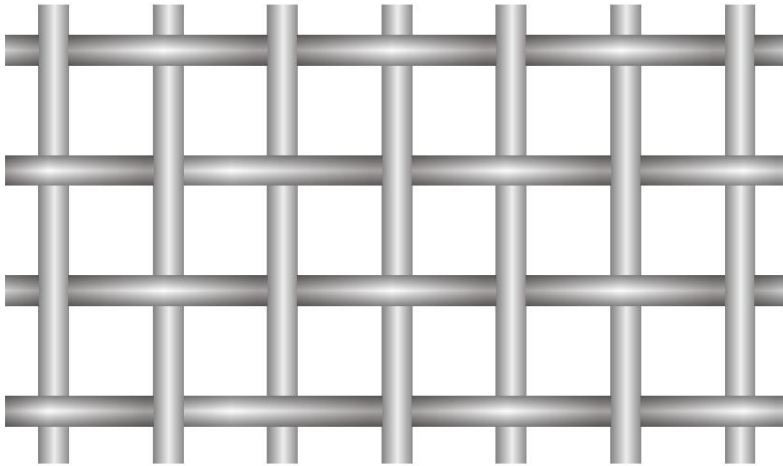


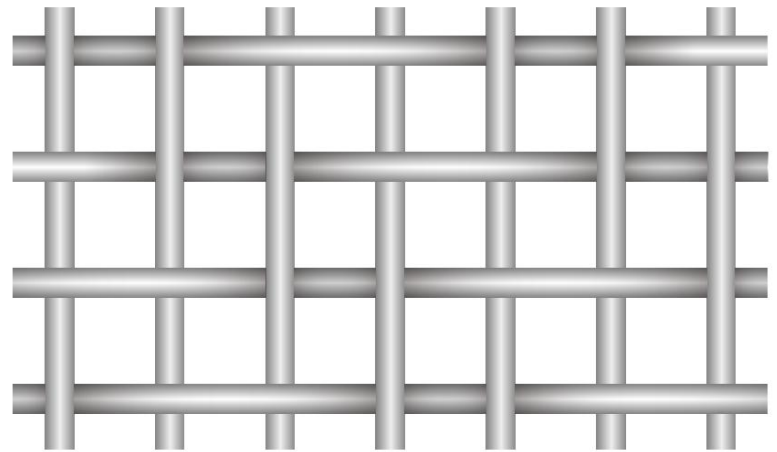


KENTE MESH

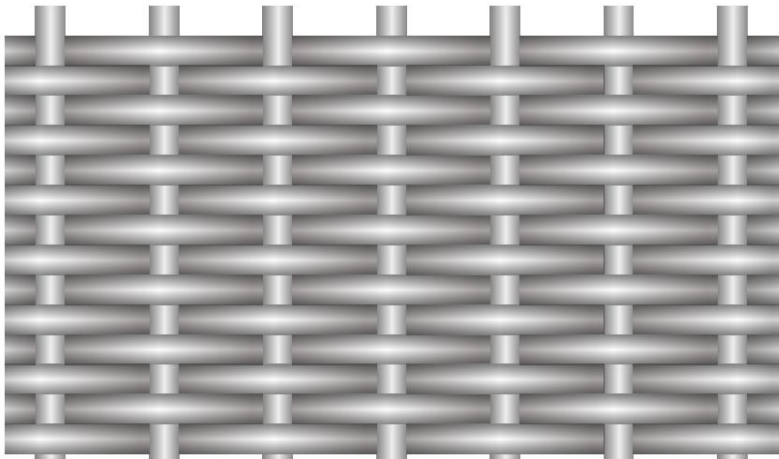
Stainless Steel Wire Mesh



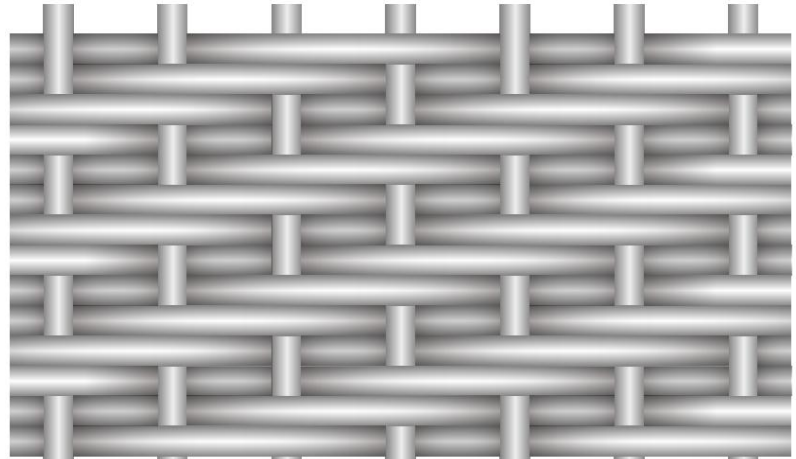
Plain Weave Stainless Steel Wire Mesh



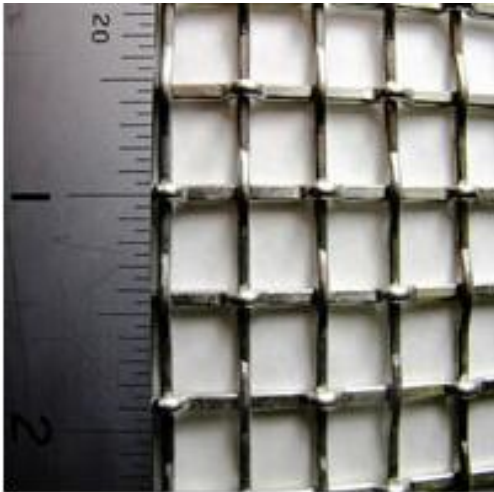
Twill Weave Stainless Steel Wire Mesh



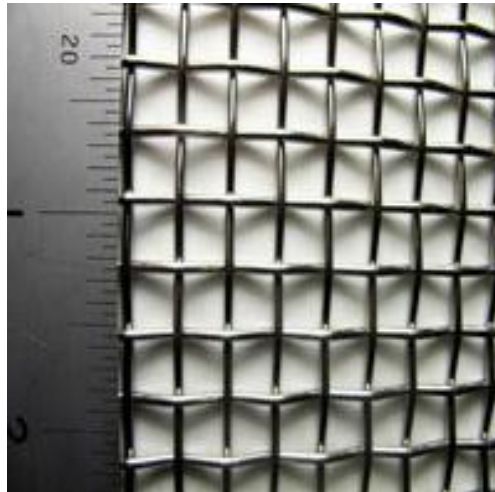
Plain Dutch Weave Stainless Steel Wire Mesh



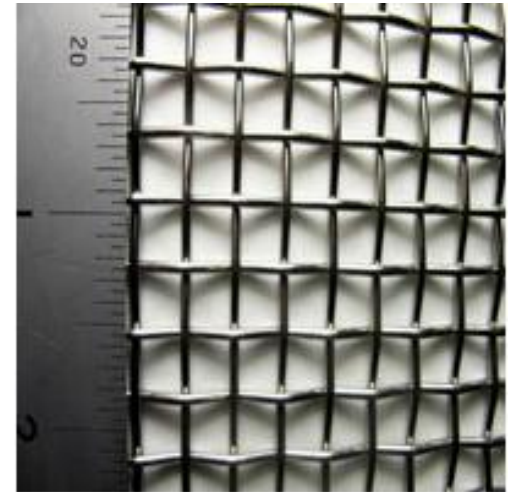
Twill Dutch Weave Stainless Steel Wire Mesh

2 Mesh

Aperture	Wire Diameter	Open Area	Mesh No.	Weight
10mm	2mm	69%	2	4kg/m ²

3 Mesh

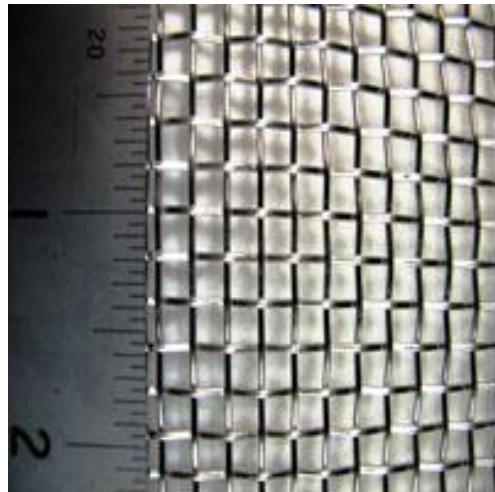
Aperture	Wire Diameter	Open Area	Mesh No.	Weight
6.87mm	1.6mm	65%	2	3.84 kg/m ²

3 Mesh

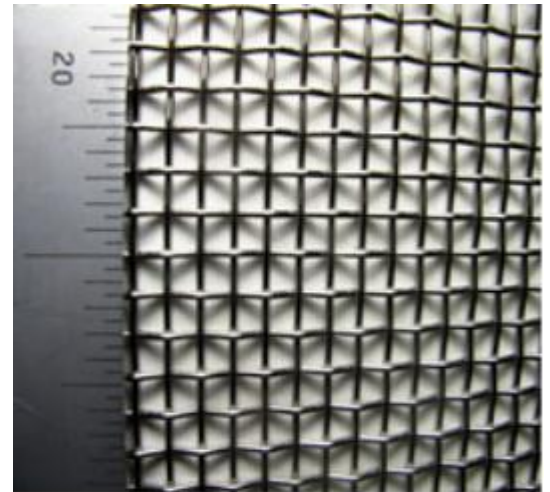
Aperture	Wire Diameter	Open Area	Mesh No.	Weight
7.07mm	1.4mm	70%	2	2.9 kg/m ²

4 Mesh

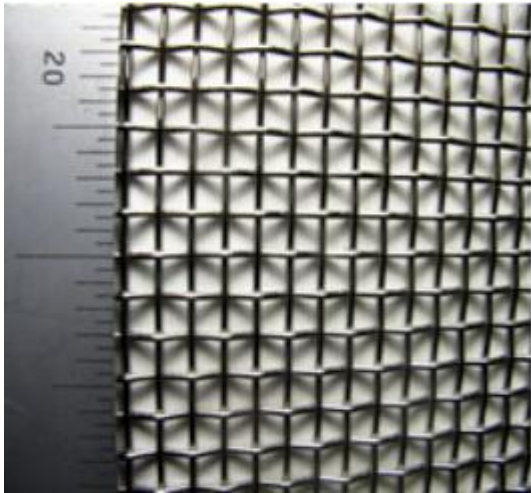
Aperture	Wire Diameter	Open Area	Mesh No.	Weight
5.45mm	0.9mm	65%	4	1.62 kg/m ²

5 Mesh

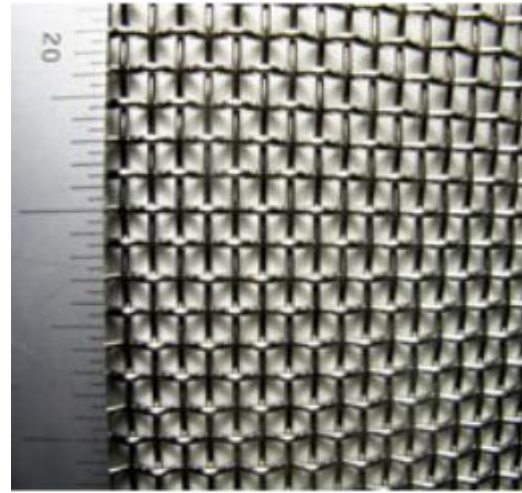
Aperture	Wire Diameter	Open Area	Mesh No.	Weight
4.0mm	1.0mm	65%	5	2.5 kg/m ²

6 Mesh

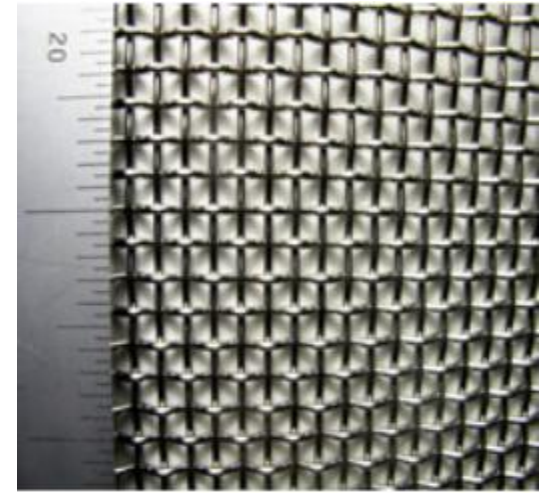
Aperture	Wire Diameter	Open Area	Mesh No.	Weight
3.5mm	0.71mm	69%	6	1.51 kg/m ²

6 Mesh

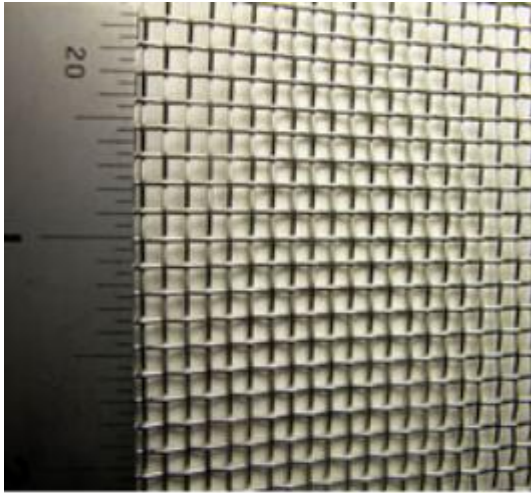
Aperture	Wire Diameter	Open Area	Mesh No.	Weight
3.33mm	0.9mm	62%	6	2.43 kg/m ²

6 Mesh

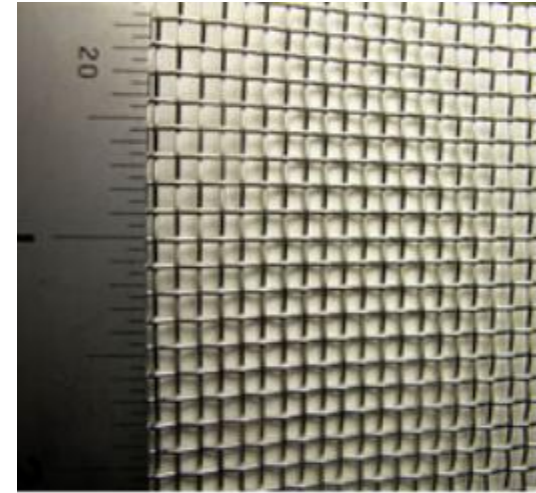
Aperture	Wire Diameter	Open Area	Mesh No.	Weight
3.0mm	1.2mm	51%	6	4.32 kg/m ²

6 Mesh

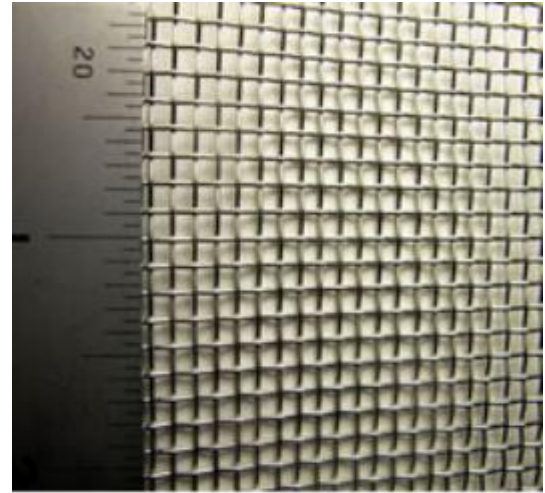
Aperture	Wire Diameter	Open Area	Mesh No.	Weight
2.8mm	1.4mm	44%	6	5.88 kg/m ²

8 Mesh

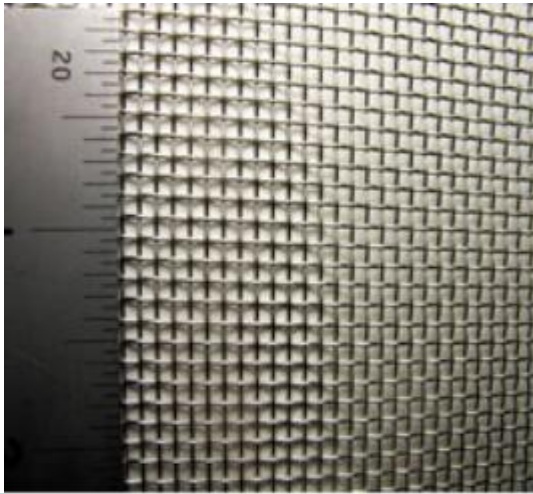
Aperture	Wire Diameter	Open Area	Mesh No.	Weight
2.62mm	0.56mm	68%	8	1.25 kg/m ²

8 Mesh

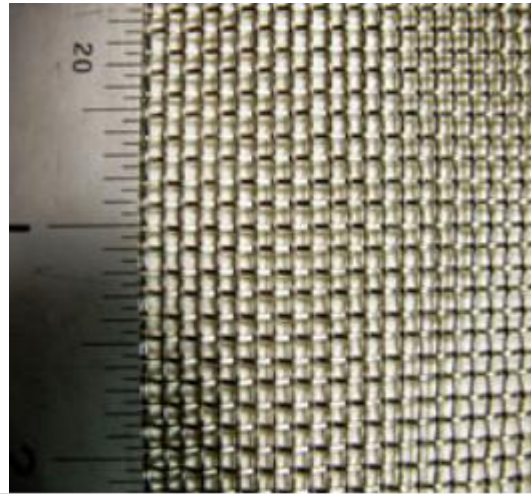
Aperture	Wire Diameter	Open Area	Mesh No.	Weight
2.47mm	0.71mm	60%	8	2.02 kg/m ²

8 Mesh

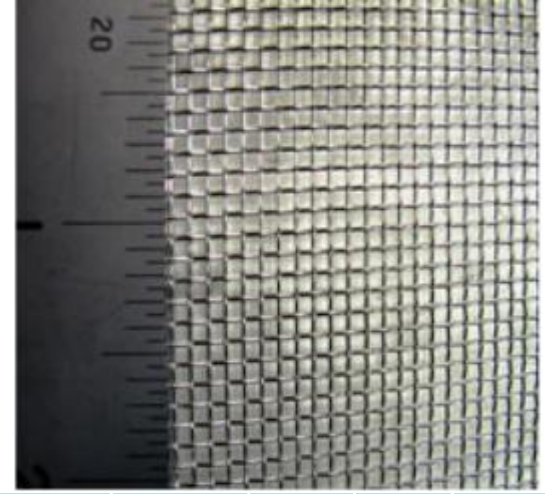
Aperture	Wire Diameter	Open Area	Mesh No.	Weight
2.28mm	0.9mm	51%	8	3.24 kg/m ²

10 Mesh

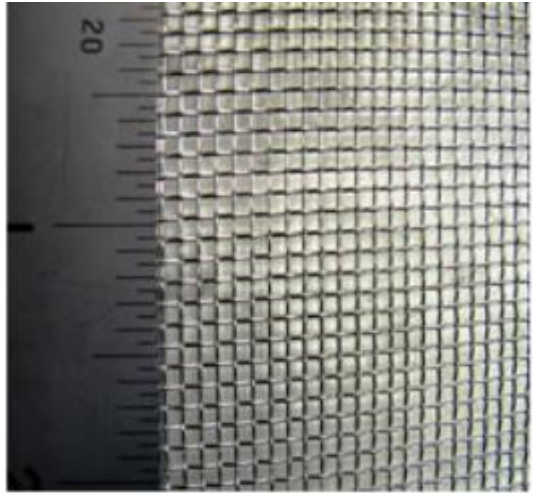
Aperture	Wire Diameter	Open Area	Mesh No.	Weight
1.98mm	0.56mm	61%	10	1.48 kg/m ²

10 Mesh

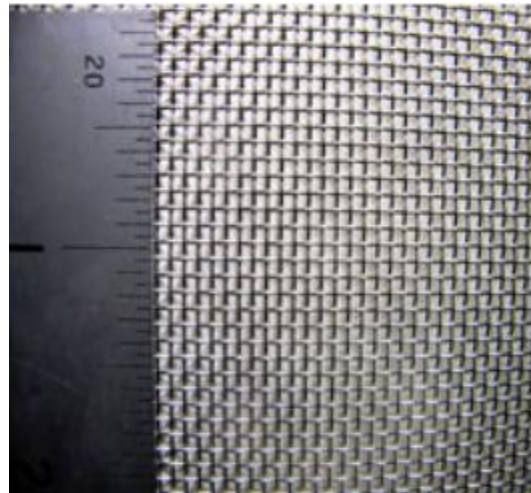
Aperture	Wire Diameter	Open Area	Mesh No.	Weight
1.91mm	0.63mm	57%	10	1.98 kg/m ²

12 Mesh

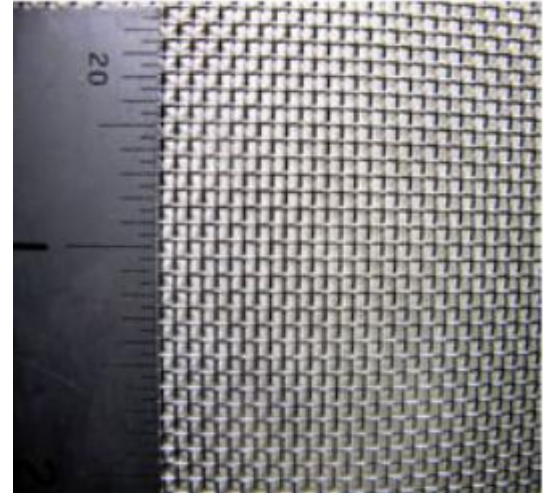
Aperture	Wire Diameter	Open Area	Mesh No.	Weight
1.78mm	0.34mm	70%	12	0.69 kg/m ²

12 Mesh

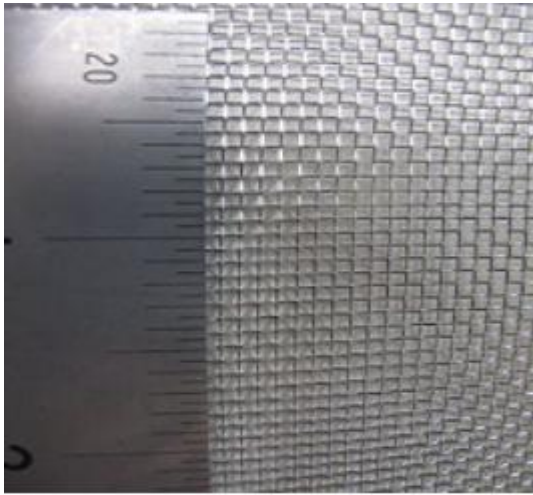
Aperture	Wire Diameter	Open Area	Mesh No.	Weight
1.67mm	0.45mm	62%	12	1.22 kg/m ²

14 Mesh

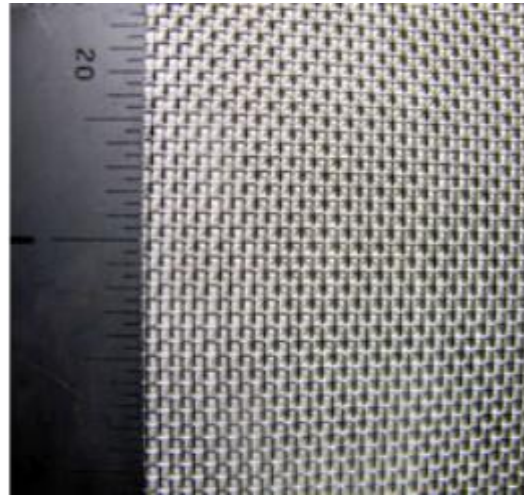
Aperture	Wire Diameter	Open Area	Mesh No.	Weight
1.57mm	0.24mm	75%	14	0.40 kg/m ²

14 Mesh

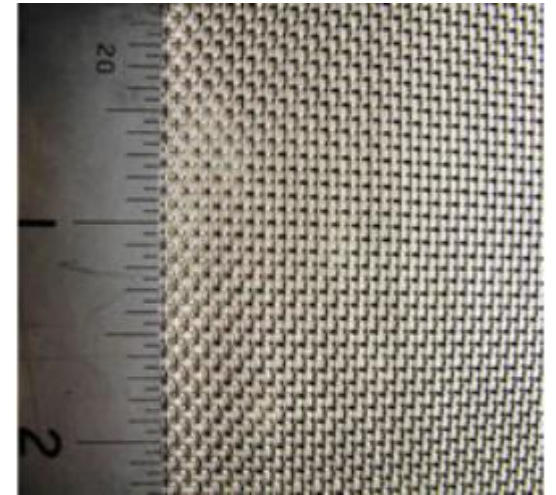
Aperture	Wire Diameter	Open Area	Mesh No.	Weight
1.36mm	0.45mm	57%	14	1.42 kg/m ²

16 Mesh

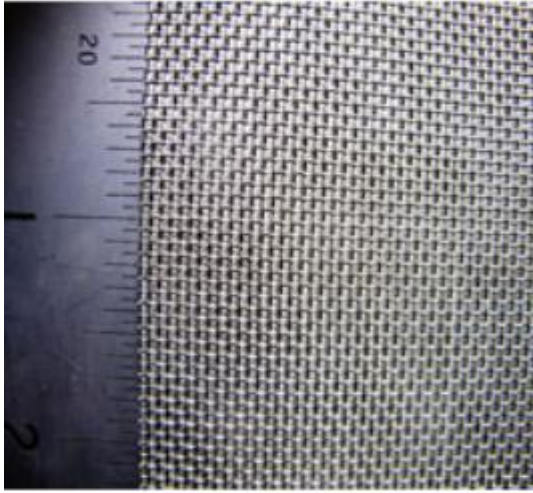
Aperture	Wire Diameter	Open Area	Mesh No.	Weight
1.31mm	0.28mm	68%	16	0.63 kg/m ²

16 Mesh

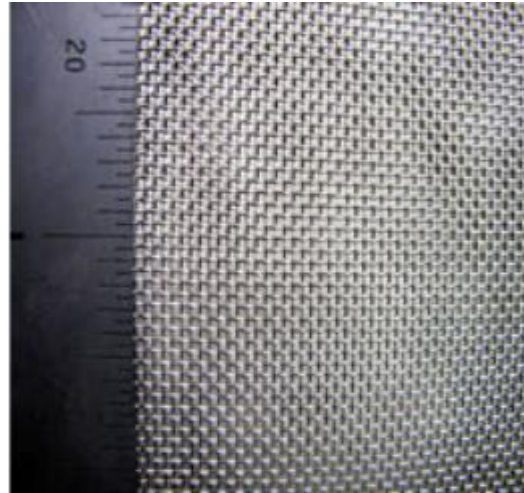
Aperture	Wire Diameter	Open Area	Mesh No.	Weight
1.19mm	0.4mm	56%	16	1.28 kg/m ²

16 Mesh

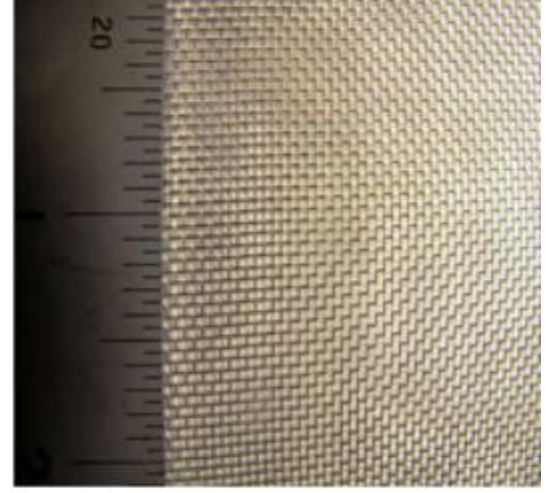
Aperture	Wire Diameter	Open Area	Mesh No.	Weight
1.03mm	0.56mm	42%	16	2.51 kg/m ²

18 Mesh

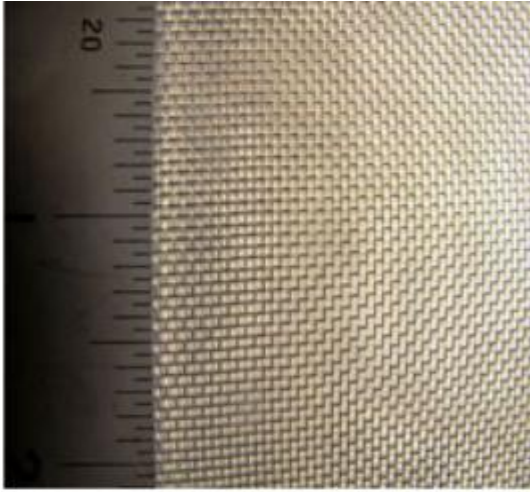
Aperture	Wire Diameter	Open Area	Mesh No.	Weight
0.96mm	0.45mm	46%	18	1.82 kg/m ²

20 Mesh

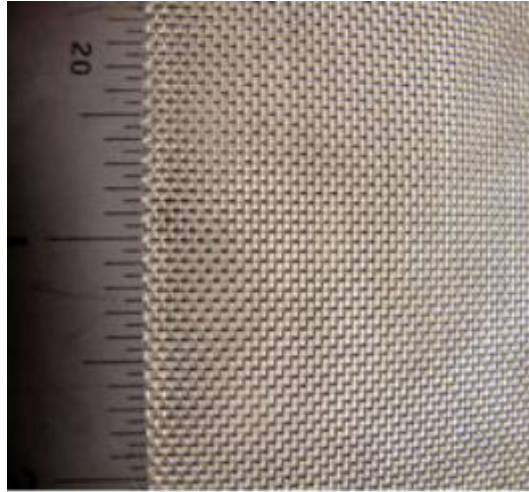
Aperture	Wire Diameter	Open Area	Mesh No.	Weight
0.99mm	0.28mm	60.8%	20	0.78 kg/m ²

22 Mesh

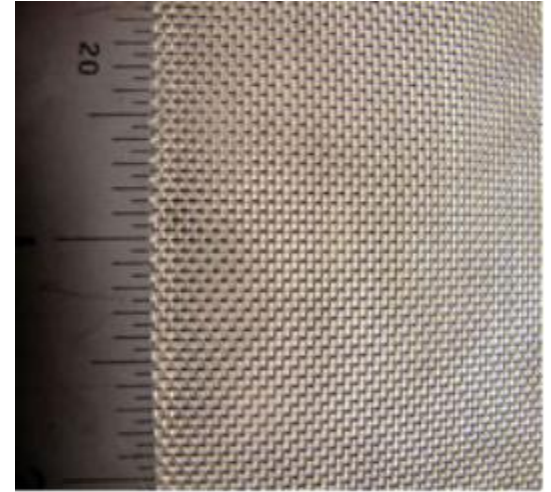
Aperture	Wire Diameter	Open Area	Mesh No.	Weight
0.94mm	0.22mm	66%	22	0.53 kg/m ²

22 Mesh

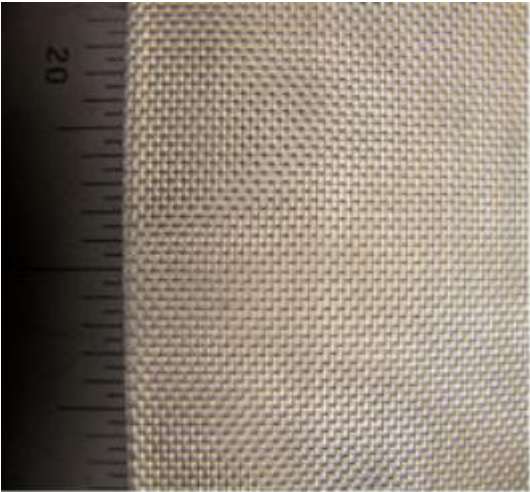
Aperture	Wire Diameter	Open Area	Mesh No.	Weight
0.71mm	0.45mm	37%	22	2.23 kg/m ²

24 Mesh

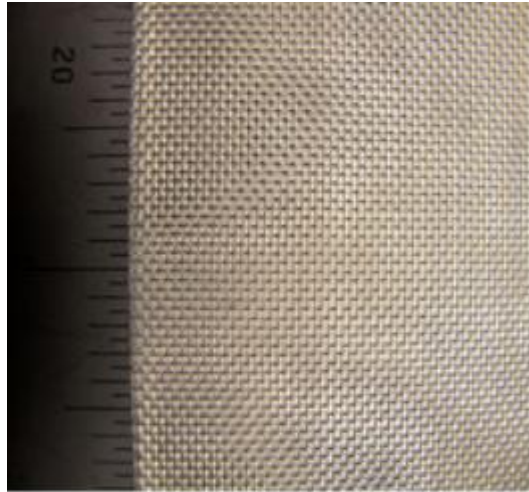
Aperture	Wire Diameter	Open Area	Mesh No.	Weight
0.81mm	0.25mm	58%	24	0.75 kg/m ²

24 Mesh

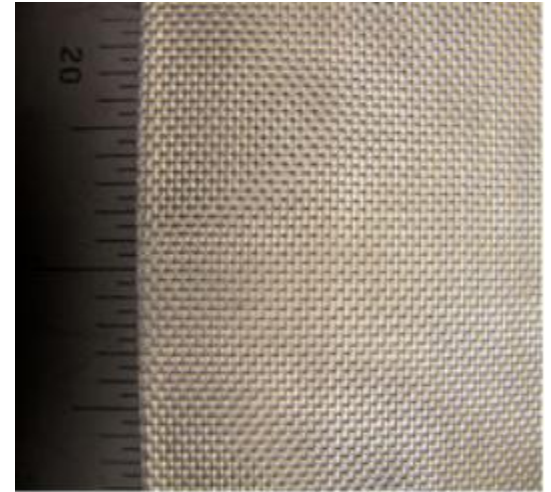
Aperture	Wire Diameter	Open Area	Mesh No.	Weight
0.7mm	0.36mm	44%	24	1.56 kg/m ²

30 Mesh

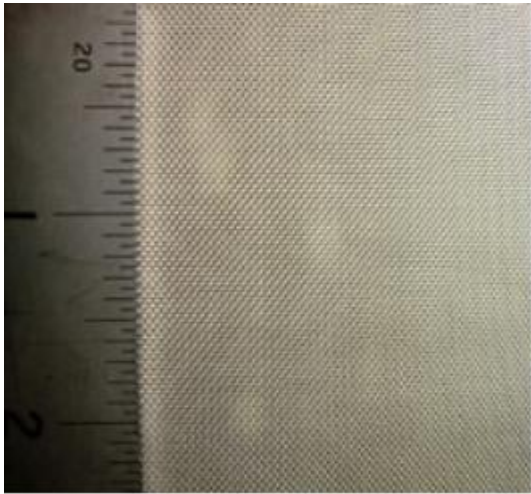
Aperture	Wire Diameter	Open Area	Mesh No.	Weight
0.69mm	0.16mm	66%	30	0.38 kg/m ²

30 Mesh

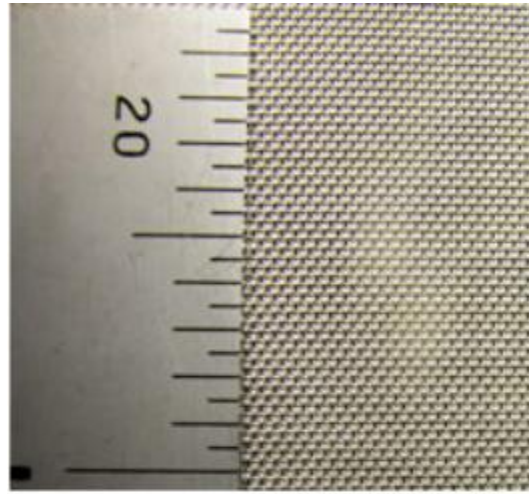
Aperture	Wire Diameter	Open Area	Mesh No.	Weight
0.66mm	0.19mm	60%	30	0.55 kg/m ²

30 Mesh

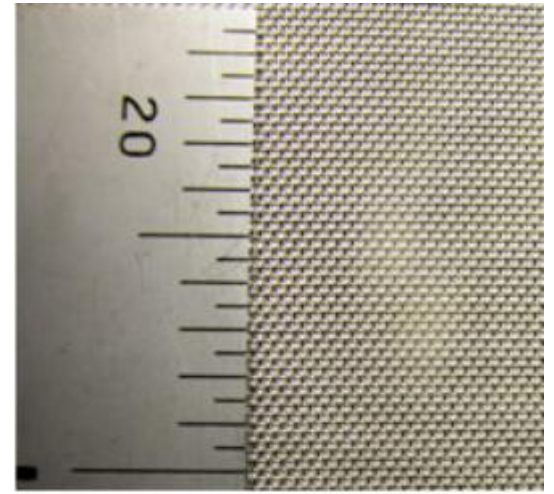
Aperture	Wire Diameter	Open Area	Mesh No.	Weight
0.56mm	0.28mm	58%	30	1.18 kg/m ²

40 Mesh

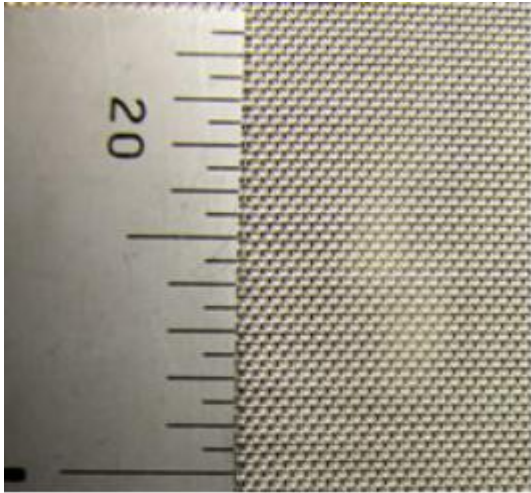
Aperture	Wire Diameter	Open Area	Mesh No.	Weight
0.22mm	0.41mm	42%	40	0.97 kg/m ²

50 Mesh

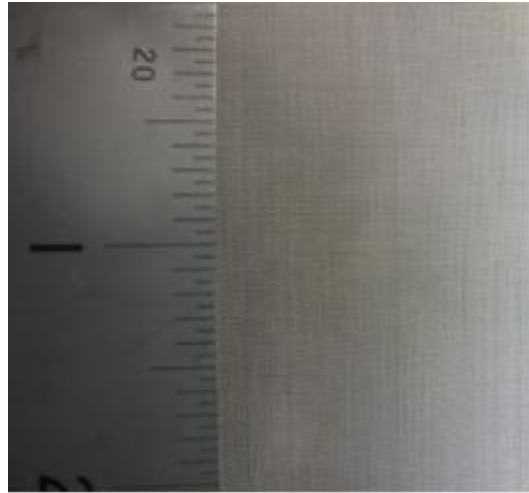
Aperture	Wire Diameter	Open Area	Mesh No.	Weight
0.35mm	0.16mm	47%	50	0.64 kg/m ²

50 Mesh

Aperture	Wire Diameter	Open Area	Mesh No.	Weight
0.32mm	0.19mm	39%	50	0.90 kg/m ²

50 Mesh

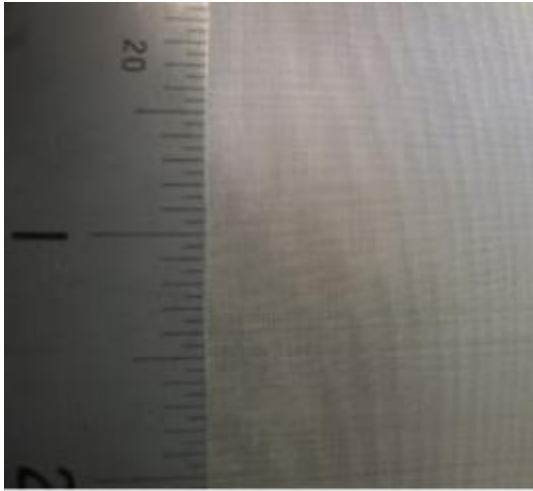
Aperture	Wire Diameter	Open Area	Mesh No.	Weight
0.31mm	0.2mm	37%	50	1.0 kg/m ²

70 Mesh

Aperture	Wire Diameter	Open Area	Mesh No.	Weight
0.223mm	0.14mm	38%	70	0.69 kg/m ²

80 Mesh

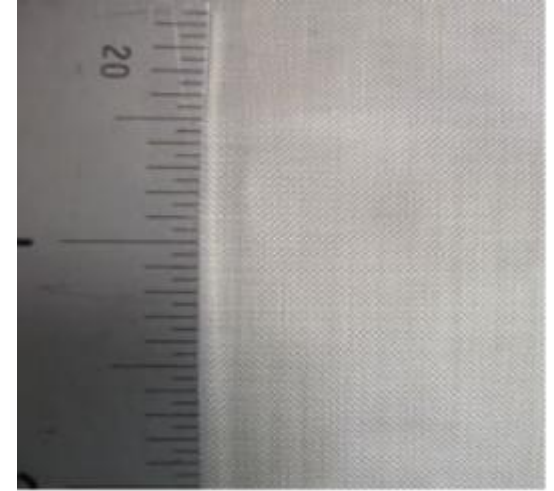
Aperture	Wire Diameter	Open Area	Mesh No.	Weight
0.178mm	0.14mm	31%	80	0.78 kg/m ²

80 Mesh

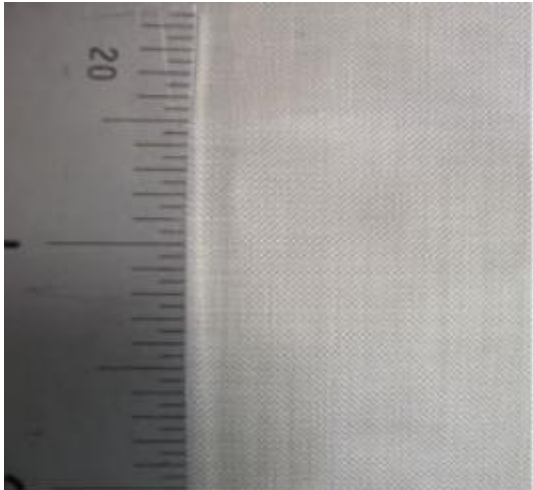
Aperture	Wire Diameter	Open Area	Mesh No.	Weight
0.158mm	0.16mm	25%	80 Twill	1.02 kg/m ²

80 Mesh

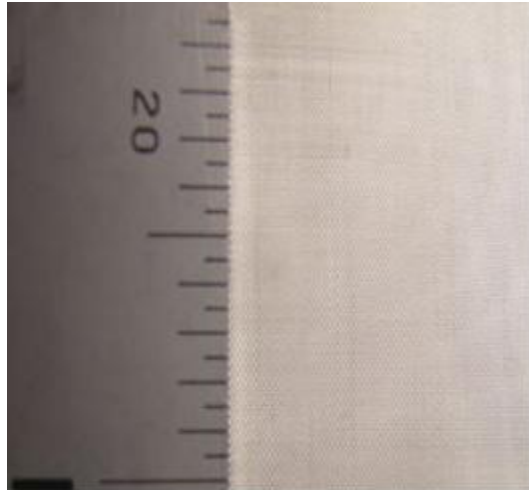
Aperture	Wire Diameter	Open Area	Mesh No.	Weight
0.186mm	0.13mm	34%	80 Twill	0.68 kg/m ²

84 Mesh

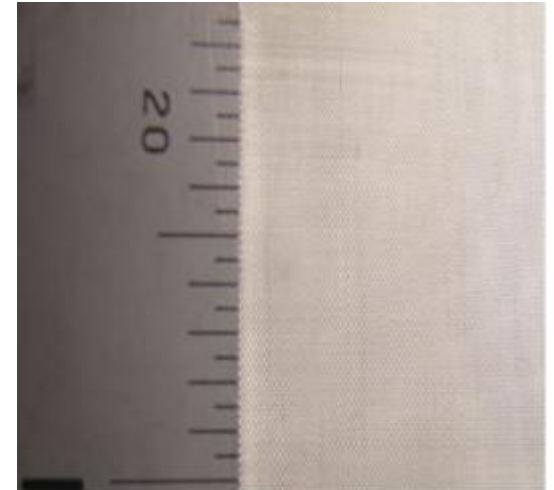
Aperture	Wire Diameter	Open Area	Mesh No.	Weight
0.239mm	0.063mm	63%	84	0.166 kg/m ²

84 Mesh

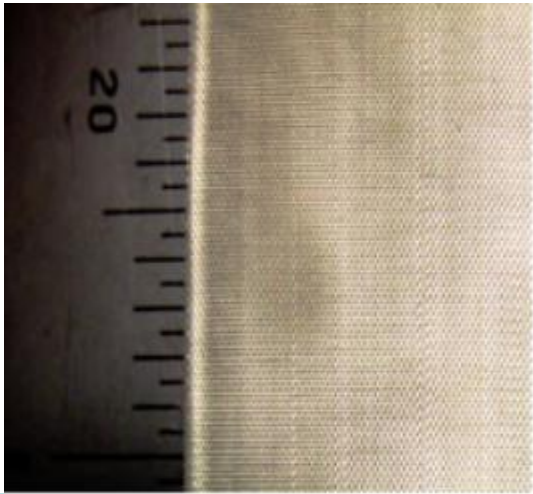
Aperture	Wire Diameter	Open Area	Mesh No.	Weight
0.212mm	0.09mm	49%	84	0.34 kg/m ²

100 Mesh

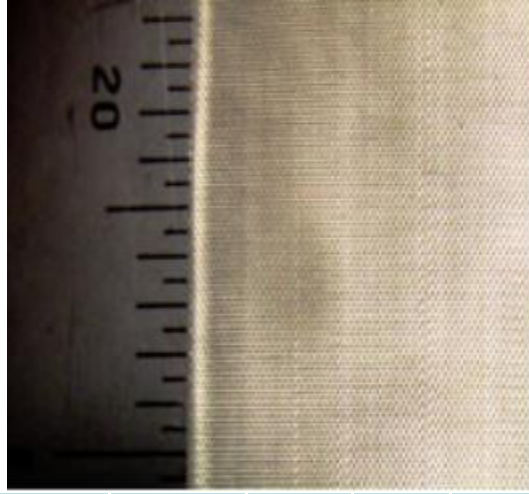
Aperture	Wire Diameter	Open Area	Mesh No.	Weight
0.198mm	0.056mm	61%	100	0.156 kg/m ²

100 Mesh

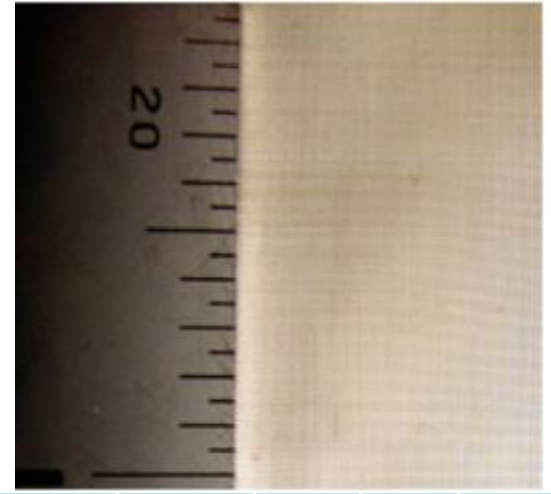
Aperture	Wire Diameter	Open Area	Mesh No.	Weight
0.154mm	0.1mm	37%	100	0.5 kg/m ²

120 Mesh

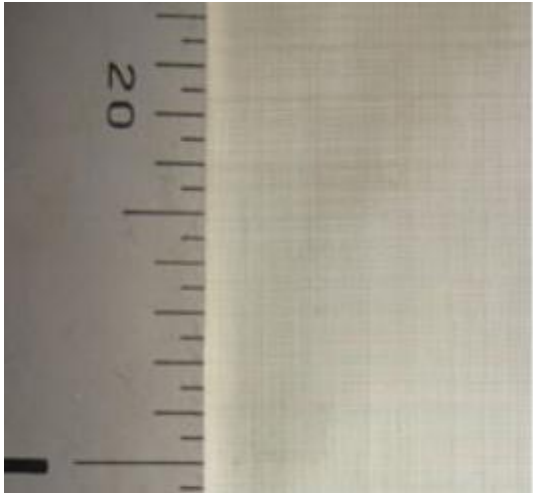
Aperture	Wire Diameter	Open Area	Mesh No.	Weight
0.149mm	0.063mm	49%	120	0.23 kg/m ²

120 Mesh

Aperture	Wire Diameter	Open Area	Mesh No.	Weight
0.122mm	0.09mm	33%	120	0.48 kg/m ²

130 Mesh

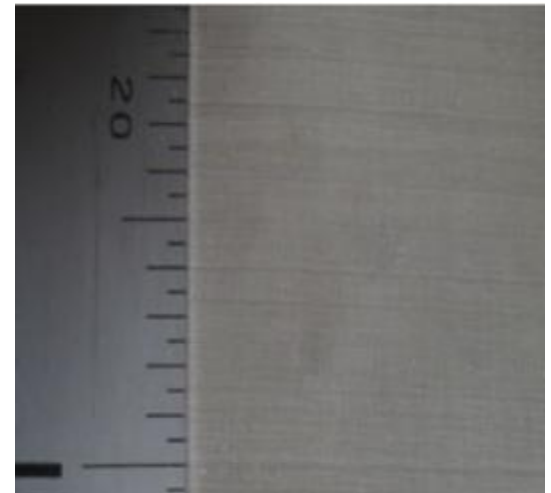
Aperture	Wire Diameter	Open Area	Mesh No.	Weight
0.152mm	0.043mm	61%	130	0.12 kg/m ²

145 Mesh

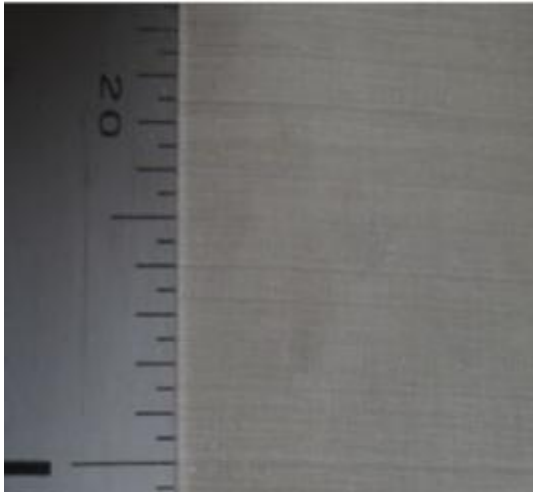
Aperture	Wire Diameter	Open Area	Mesh No.	Weight
0.123mm	0.052mm	49%	145	0.19 kg/m ²

180 Mesh

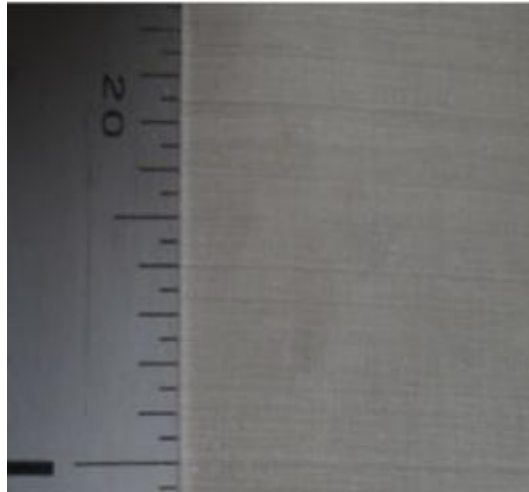
Aperture	Wire Diameter	Open Area	Mesh No.	Weight
0.091mm	0.05mm	42%	180	0.225 kg/m ²

200 Mesh

Aperture	Wire Diameter	Open Area	Mesh No.	Weight
0.099mm	0.028mm	60.7%	200	0.0625 kg/m ²

200 Mesh

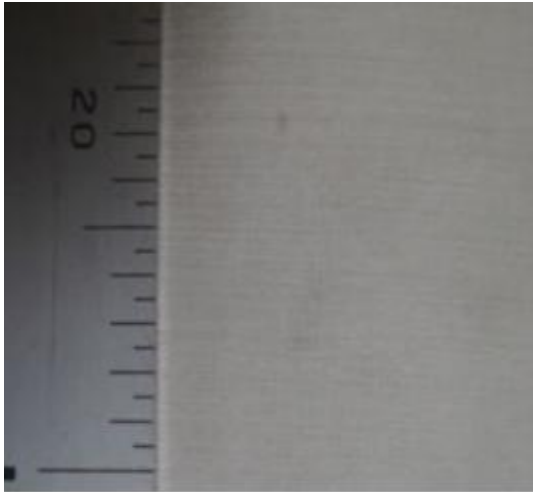
Aperture	Wire Diameter	Open Area	Mesh No.	Weight
0.087mm	0.04mm	47%	200	0.16 kg/m ²

200 Mesh

Aperture	Wire Diameter	Open Area	Mesh No.	Weight
0.077mm	0.05mm	37%	200	0.25 kg/m ²

250 Mesh

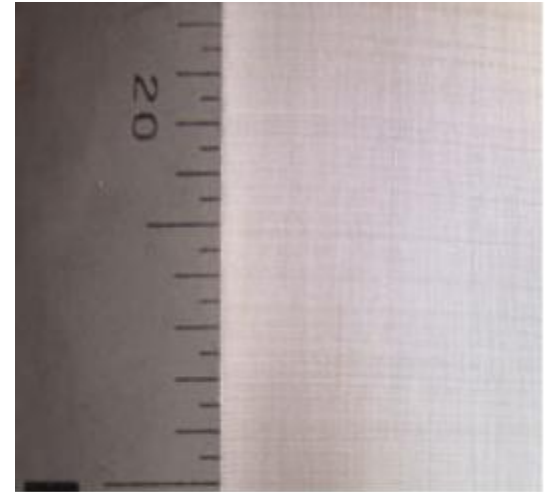
Aperture	Wire Diameter	Open Area	Mesh No.	Weight
0.062mm	0.04mm	37%	250	0.2 kg/m ²

270 Mesh

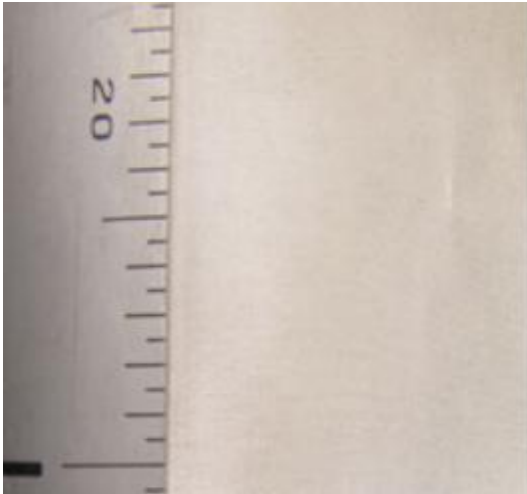
Aperture	Wire Diameter	Open Area	Mesh No.	Weight
0.058mm	0.036mm	38%	270	0.17 kg/m ²

300 Mesh

Aperture	Wire Diameter	Open Area	Mesh No.	Weight
0.045mm	0.04mm	28%	300	0.04 kg/m ²

300 Mesh

Aperture	Wire Diameter	Open Area	Mesh No.	Weight
0.058mm	0.036mm	42%	300	0.19 kg/m ²

325 Mesh

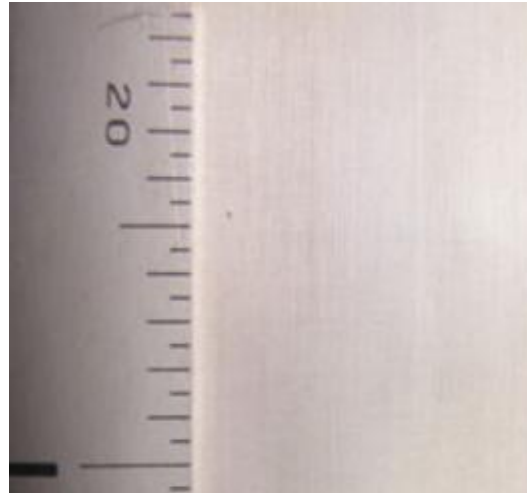
Aperture	Wire Diameter	Open Area	Mesh No.	Weight
0.042mm	0.036mm	29%	325	0.21 kg/m ²

400 Mesh

Aperture	Wire Diameter	Open Area	Mesh No.	Weight
0.034mm	0.03mm	28%	400	0.18 kg/m ²

400 Mesh

Aperture	Wire Diameter	Open Area	Mesh No.	Weight
0.039mm	0.025mm	37%	400	0.125 kg/m ²

500 Mesh

Aperture	Wire Diameter	Open Area	Mesh No.	Weight
0.026mm	0.025mm	37%	500 Twill	0.16 kg/m ²

Plain weave up to 425 mesh.

Twill weave up to 635 mesh.

Dutch weave up to 400 × 2800 mesh.

Other Specifications also can do,
please feel free contact us for the quote!



KENTE MESH MANUFACTURE CO.,LIMITED

Address: Wire Mesh Industrial zone,Anping,Hebei,China 053600

Mobile/Whatsapp/Wechat: +86 13315818880

info@kentemesh.com

www.kentemesh.com